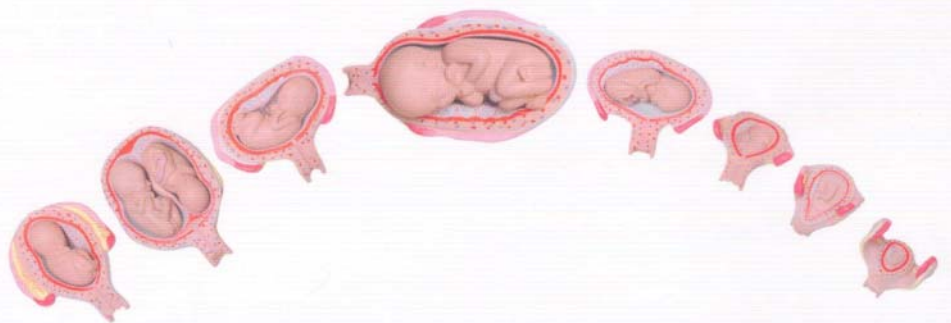
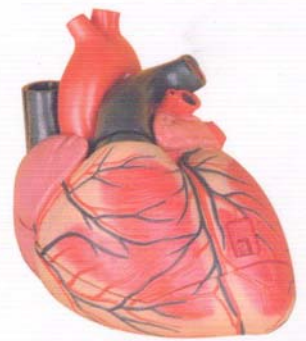
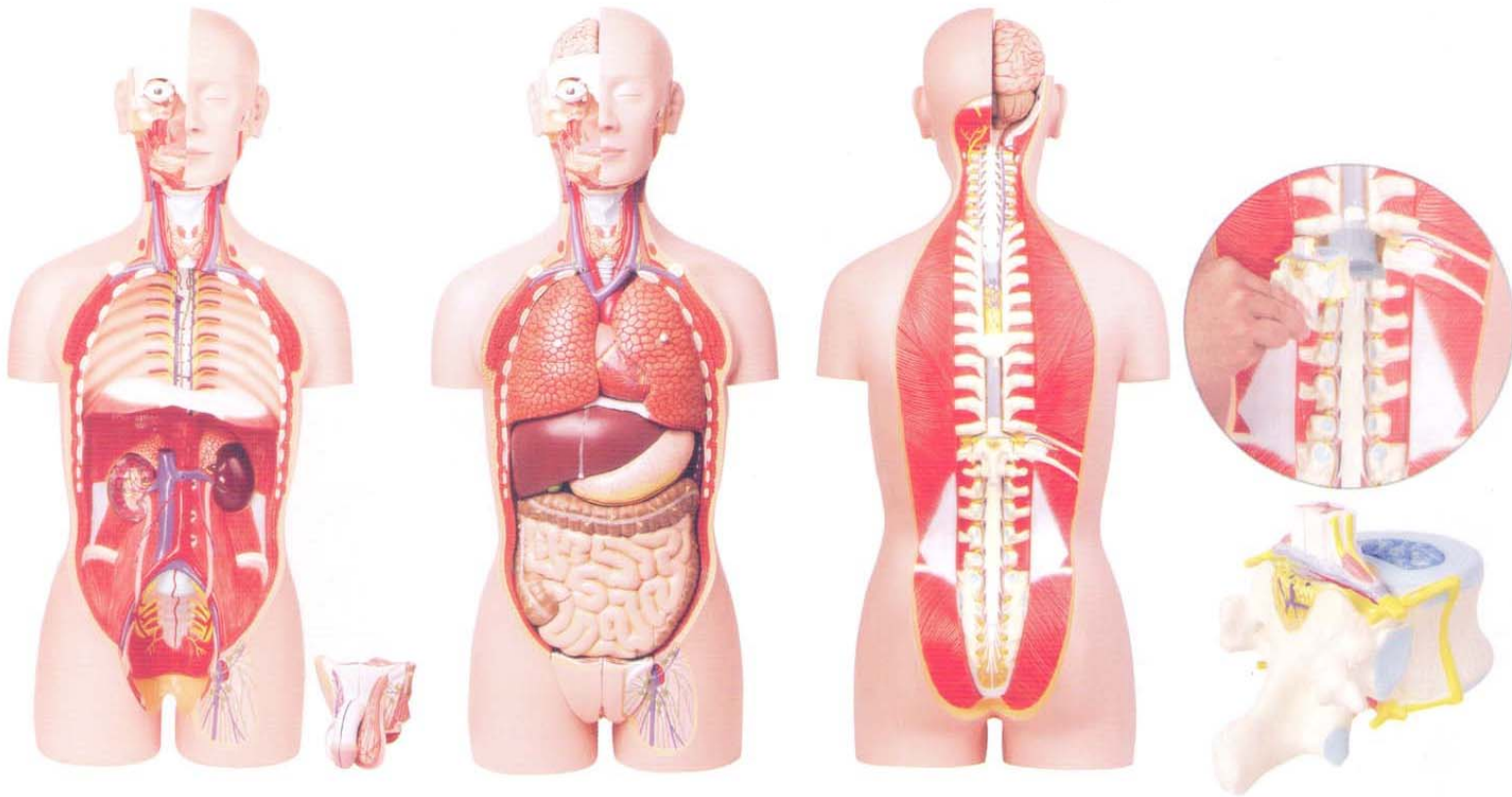


# **PVC Anatomical Models Gift Models**



## A300:Duel-Sex Exchangeable Deluxe Torso,Open back



The torso is characterized by its exchangeable male and female reproductive organs. Like Classic torso, all the internal organs are well shown to the very details. The mouth cavity and nasal cavity is open to show the inlet of digestive and respiratory system. The head is open so that the cerebrum with cerebellum can be taken out for close observation. With the removable male and female reproductive organ, and removable half kidney, the whole urinary system and reproductive system are well depicted. The lung can be completely removed, and the important structures on the inner wall of thoracic cavity like sympathetic column, azygos vein, hemiazygos vein, thoracic duct are well shown.

It is most characterized by its open neck and back, which provide a full view of the nervous system including the brain and the whole spinal cord. The 12<sup>th</sup> thoracic vertebra can be taken out for close observation of vertebrae, spinal cord, spinal nerves and 3 layers of muscles.

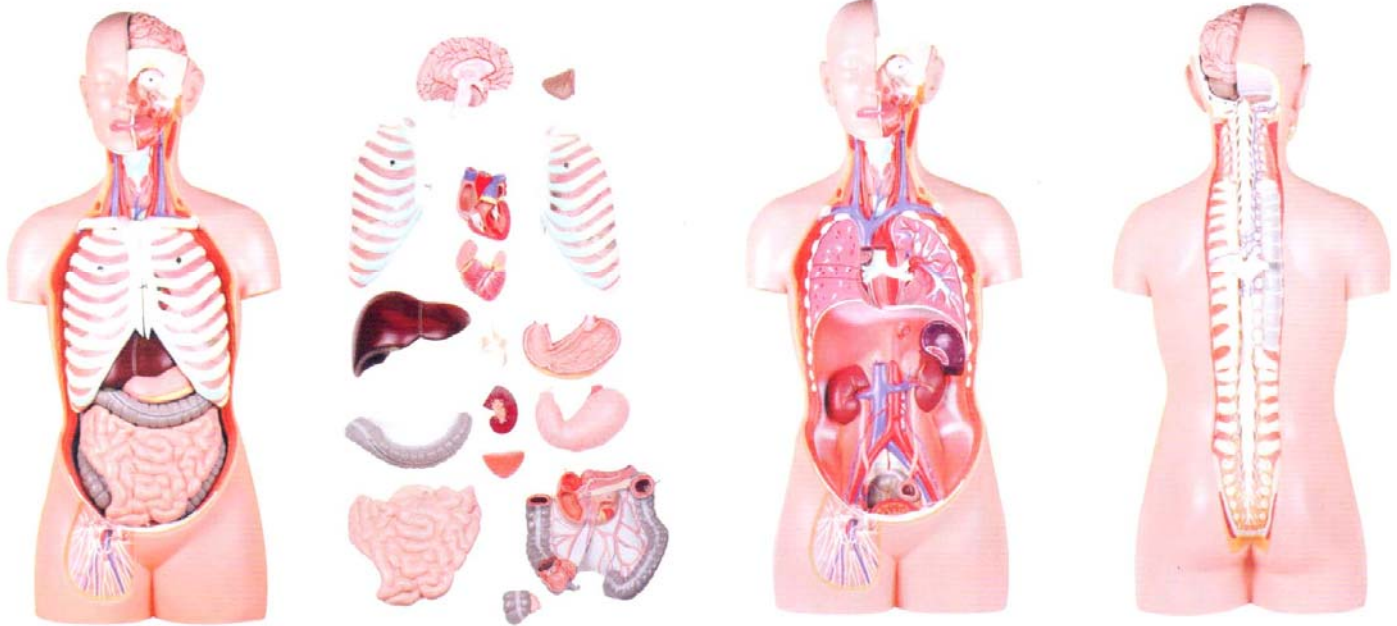
Total 27 parts as follows:

cerebrum with cerebellum (1) eyeball (1) lung (4) trachea and bronchi (1) heart (2)  
 esophagus and thoracic aorta (1) liver (1) half of kidney (1)  
 pancreas, spleen and duodenum (1) stomach (2) large and small intestine (1)  
 caecum cove(1) male and female organ (8) 12<sup>th</sup> thoracic vertebra with spinal cord (1)  
 torso main body (1)

Made of High Quality PVC. On a base. Dim: 87\*33\*26cm



**A310: Classic Unisex Torso, 17 parts, open back**



This classic 85cm torso shows in details almost all system and organ of human body: digestive system, respiratory system, urinary system, open head and back showing central nervous system, total 17 parts:

Torso(1) cerebrum (1) cerebellum(1) left and right lung with rib (2) heart (2) liver (1) stomach (2) half kidney (1) half bladder (1) 7th thoracic vertebrae (1) intestine (1) colon with pancreas (1) removable transverse colon (1) cecum cover (1)

On a base. Size: 87\*33\*26cm

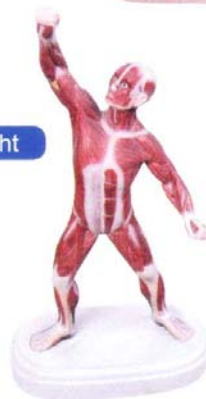
**A320: mini torso, 12 parts, 50cm height**



This half natural size mini torso is 50cm high, total 12 removable parts:

Left and right head (2) Brain (1) left and right lung (2) heart (2) liver (1) stomach (1) intestine with pancreas (1) cecum cover (1) torso body (1). Size: 52\*18\*18cm

**A341: muscle figure, 1/10 natural size, 21cm height**



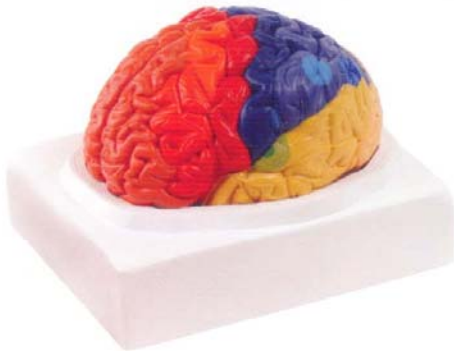
1/10 natural size, made of high quality PVC, 21cm height.

**A610: Brain Model with artery, 2 parts**



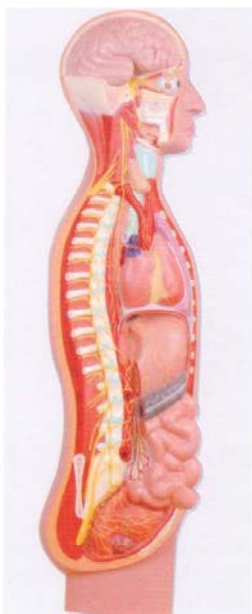
Natural size, 2 parts, shows left and right brain with artery distribution. On a base. Size: 19\*17\*18cm

**A612: Brain Model with functional region painted**



Natural size, 2 parts, painted to show different functional area of human brain. On a base. Size: 19\*17\*18cm

**A622: Sympathetic Nervous System**



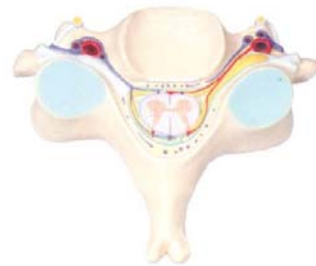
This model shows in details the sympathetic & parasympathetic nerves distribution of human body. Relief 2/3 natural size. Made with high quality PVC. On a base. Size: 70\*30\*4cm

**A611: Brain Model with artery, 9 parts**



9 parts, natural size, with artery distribution. the dismantable parts are temporal and occipital lobes(2), the frontal and parietal lobes(2), the cerebellum(2), the brain stem(2) and the basilar artery(1) respectively

**A615: 5th Cervical Vertebrae, 7 times enlarged**



7X life size. This model shows in great detail the structure of the 5th cervical vertebra; a transverse section of the spinal cord with grey and white matter, the nerve branches, the spinal ganglion and the blood vessels. Mounted on board. Size: 40x26x10 cm Weight: approx, 1300g

**A623: Human Nervous System**



This half size model shows the human nervous system. On a board. Made with high quality PVC. Size: 90\*30\*8cm

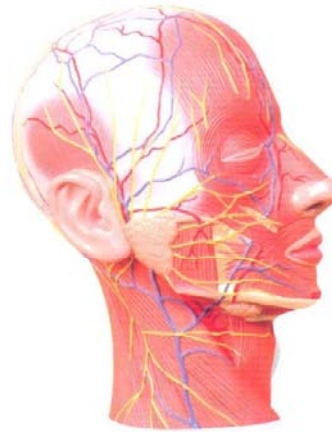


**C630: Sagittal Section Of Human Head**



Relief model,PVC,on a base.  
Dim:30\*20\*7cm

**C631: Half Head Model**



Shows medial sagittal plane of human head and facial nerves and blood vessels.On a base PVC.  
Dim:27\*10\*22cm

**C632: Head with Brain Model, 4 parts**



Natural size, 4 parts,respectively they are cerebrum, cerebellum, eyeball and head.shows also nasal cavity and oral cavity. On a base.  
size:25\*20\*20cm

**A640: Neuron Model, enlarged 2500 times**



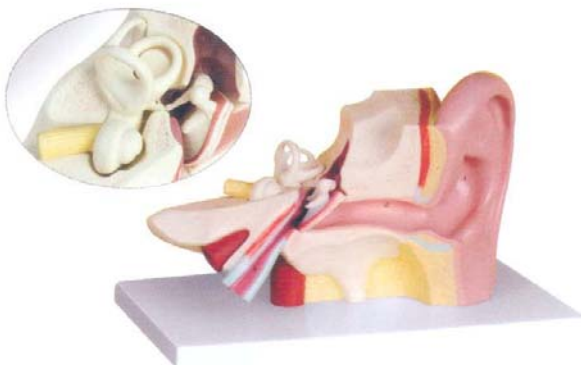
Neuron model,2500X enlarged.2 parts.On a base,Made of high quality PVC.Size:36\*18\*10cm

**A660: Eye Model, 6 times enlarged, 6 parts**



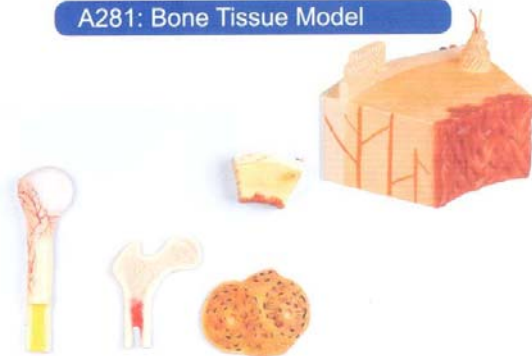
6X life size. The model can be dissected on the horizontal plane to show internal details. Cornea, iris, lens and vitreous body can be removed. Muscular attachments on the sclera and part of the choroid are also shown. Mounted on base with stand.  
Size: 16.5x19.5x16.5 cm - Weight approx. 1100g

**A670: Ear Model, 3 times enlarged, 3 parts**



3X life size. The model shows details of the external, middle and inner ear. The eardrum with malleus, incus and stapes are removable. The other removable part is composed of the cochlea and labyrinth with vestibular and cochlear nerves.Mounted on base.  
Size: 18x23x33 cm Weight: approx. 1000 g

**A281: Bone Tissue Model**



Shows general structure of a long bone,its section shows compact and cancellous bone. Installed on a base.Size:53\*38\*10cm

**A101: 170cm Articulated Skeleton**



Human skeleton, articulated, 170cm height, installed. On a stand and roller base with dust cover.

**A102: 170cm Muscle Skeleton**



Human skeleton, articulated, painted with muscle insertions in red and blue, Marked with numbers, and instruction manual is supplied for an detailed explanation of muscles. Installed on a stand and roller base with dust cover.

**A108: Hand Bone, Articulated**



**A109: Foot Bone, Articulated**



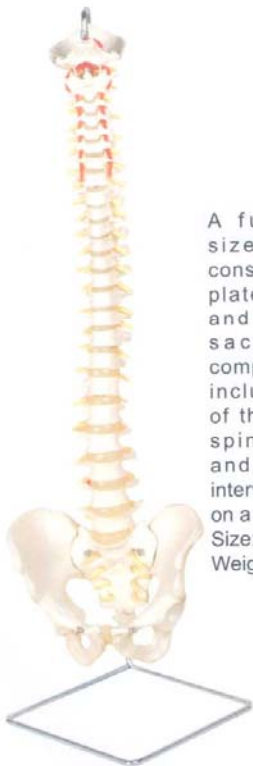
Natural size, articulated, made of high quality PVC.

**A150: Human Skull, 3 parts**



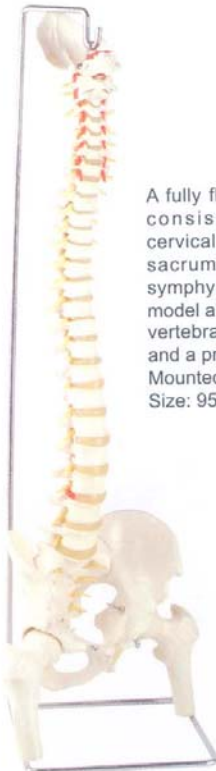
A detailed reproduction of a life size human skull with all structural details. The skullcap is removable to show the internal structure of the skull. The mandible is articulated and removable. All of the joints, sutures, fissures, foramina and processes are portrayed with utmost accuracy. Size: 25x20x20 cm- Weight approx. 950 g

**A120: Classic Flexible Spinal Column**



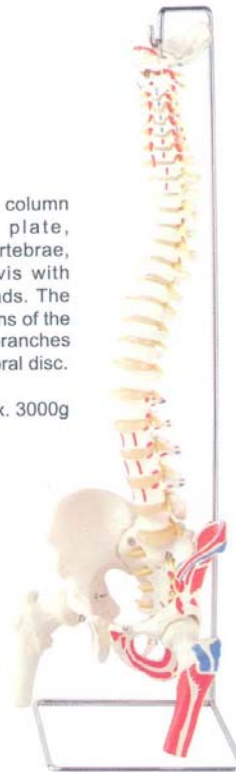
A fully flexible life size vertebral column consisting of the occipital plate, cervical, thoracic and lumbar vertebrae, sacrum, coccyx and complete pelvis. Features include representations of the vertebral arteries, spinal nerve branches and a prolapsed L3-L4 intervertebral disc. Mounted on a stand for hanging  
Size: 90x20x20 cm  
Weight: approx. 3000 g

**A121: Flexible Spinal Column with Femur**



A fully flexible life size vertebral column consisting of the occipital plate, cervical, thoracic and lumbar vertebrae, sacrum, coccyx, complete pelvis with symphysis, removable femur heads. The model also features representations of the vertebral arteries, spinal nerve branches and a prolapsed L3-L4 intervertebral disc. Mounted on a stand for hanging  
Size: 95x20x20cm Weight: approx. 3000g

**A121P: Flexible Spinal Column with Femur, with muscle insertion**



A fully flexible life size vertebral column including the occipital plate, cervical, thoracic and lumbar vertebrae, sacrum, coccyx, complete pelvis with symphysis, and removable femur heads. The model also features representations of the vertebral arteries, spinal nerve branches and prolapsed L3-L4 intervertebral disc. The left side of the skeleton shows the points of origin (red) and the points of insertion (blue) of the muscles. Mounted on a stand for hanging  
Size: 95x20x20 cm  
Weight: approx. 3000 g



**A122: Flexible Spinal Column, open sacrum**



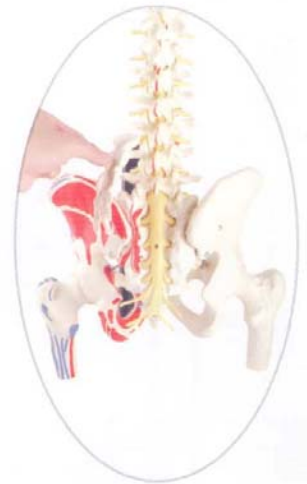
A fully flexible life size vertebral column consisting of the occipital plate, cervical, thoracic and lumbar vertebrae, sacrum, coccyx and complete pelvis. Features include representations of the vertebral arteries, spinal nerve branches and a prolapsed L3-L4 intervertebral disc. The sacral crest and the coccyx are removable to show the sacral portion of the spinal cord. The sacral crest and coccyx are removable to show the sacral section of the spinal cord and associated nerve branches. Mounted on a stand for hanging- size:90\*20\*20cm Weight:approx.3000g

**A123: Flexible Spinal Column, with Femur, open sacrum**



A fully flexible life size vertebral column consisting of the occipital plate, cervical, thoracic and lumbar vertebrae, sacrum, coccyx, complete pelvis with articulated, removable femur heads. Additional features include representations of the vertebral arteries, spinal nerve branches, and a prolapsed L3-L4 intervertebral disc. The sacral crest and coccyx are removable to show the sacral section of the spinal cord and associated nerve branches. Mounted on a stand for hanging Size: 95x20x20 cm Weight: approx. 3000 g

**A123P: Flexible Spinal Column, with Femur, open sacrum, with muscle insertion**



A fully flexible life size vertebral column including the occipital plate, cervical, thoracic and lumbar vertebrae, sacrum, coccyx, complete pelvis with symphysis, and removable femur heads. The model also features representations of the vertebral arteries, spinal nerve branches and prolapsed L3-L4 intervertebral disc. The left side of the skeleton shows the points of origin (red) and the points of insertion (blue) of the muscles. The sacral crest and coccyx are removable to show the sacral section of the spinal cord and associated nerve branches. Mounted on a stand for hanging Size: 95x20x20 cm Weight: approx. 3000 g

**A133: Atlas and Axis**



Natural size, PVC, On a stand and base. Size: 12\*12\*17cm

**A106: Forearm with Hand Bone, Articulated**



Natural size, PVC, articulated. Size: 40\*10\*5cm

**A107: Lower Limb, Articulated**



Natural size, articulated, PVC. Size: 94\*25\*10cm

**A110: Sacrum and Coccyx**



Cast of natural specimen PVC. Size: 17\*12\*10cm

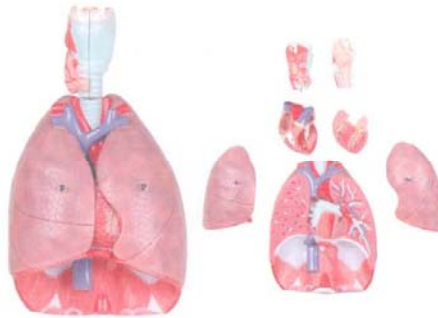
**A440: Larynx Model, 5 Parts, 2 times enlarged**



This 5-part model is sectioned longitudinally to reveal intimate details of internal structures, including the hyoid bone, cartilages, ligaments, muscles, vessels, nerves and thyroid gland. Mounted on base with stand.

Size: 18x11x8 cm - Weight: approx. 450 g

**A430: Larynx, Heart and Lung Model, 7 Parts (Respiratory System Model)**



A life size reproduction of the complete human respiratory system. It is composed of 7 parts showing the larynx (dissected along the sagittal plane), the lungs (dissected along the frontal plane) and a 2-part heart. Mounted on base.

Size: 26x40x12 cm- Weight: approx. 1300 g

**A435: Relief Model of Respiratory System with Pulmonary Alveoli**



A relief model of the respiratory system, including the oronasal cavity, larynx and trachea, primary bronchi and bronchial tree. The upper respiratory tract is sectioned along the medial sagittal plane. An alveolus with blood vessels (about 150X life size) is shown with excellent internal detail. Mounted on base.

Size: 53x38x6 cm Weight: approx. 2200 g

**A436: Nasal Cavity, natural size, 1 part**



This life size model shows a section of the nasal cavity. Mounted on base with stand. Size: 16.5x4.5x14.5 cm Weight: 350 g

**A434: Segmental Brochial Tree**



Shows segmental bronchial tree of lung, made of high quality, PVC, on a stand and base. Dim: 25\*30\*40cm

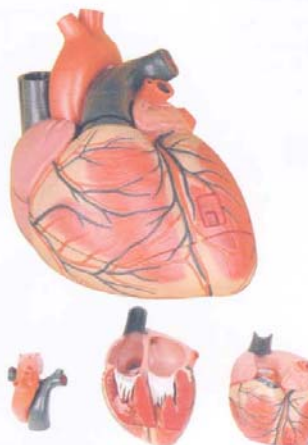
**A400: Heart Model, 2 parts, natural size**



Life size in 2 parts. The anterior heart wall can be removed to show the left and right ventricles and atria as well as the tricuspid, pulmonary, mitral and aortic valves. Mounted on base with stand.

Size: 11x7.5x8 cm - Weight: approx. 230 g

**A410: Heart Model, 3 times enlarged, 3 parts**

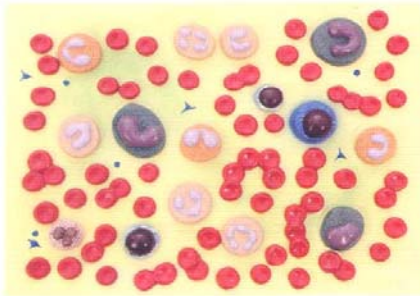


This 3-part model is 3X life size. It is sectioned along the anterior plane to show internal structures, including the cardiac valves and the comparative morphology of the right and left ventricles. Mounted on base.

Size: 25x20x27cm - Weight: approx. 2000 g

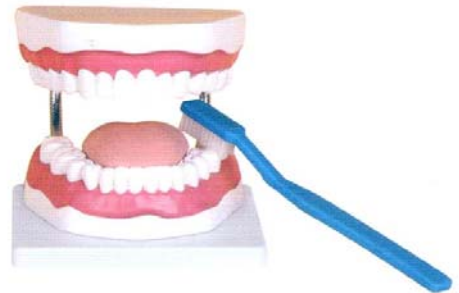


**A421: Blood Cell Model**



Enlarged 2000 times, this model shows the various types of blood cells, including red blood cells; white blood cells (lymphocytes, monocytes, neutrophils, eosinophils and basophils) and blood platelets. Mounted on board. Size: 53x38x6.5 cm Weight: approx. 2700 g

**A520: Teeth Care Model, with Teeth Brush, 3 Times Enlarged**



A 3x life size model that is useful for teaching the correct way to brush teeth. A giant toothbrush is included. Mounted on base Size: 15x16x22 cm Weight: approx. 1000 g

**A501: Lower Jaw Model, 3 Time Enlarged, 6 Parts**



This 3X life size model is divisible into 6 parts to show all the characteristics of an adult half mandible. A portion of the jaw can be removed to show the roots of the teeth and the internal structure of the bone. Canine and molar teeth can be removed and dissected longitudinally to observe the tooth roots, pulp and nerves. Mounted on base with stand. Size: 35x18x10 cm Weight approx. 1130 g

**A450: Human Digestive System, 2 Parts**



This life size model shows the human digestive tract from mouth cavity to rectum. The oral cavity, the pharynx and the first part of the esophagus are dissected along the medial sagittal plane. The liver is shown together with the gall bladder and the pancreas is dissected to expose internal features. The stomach is open along the frontal plane; the duodenum, caecum, part of the small intestine and the rectum are open to expose the interior. The transverse colon is removable. Mounted on board. Size: 90x30x13 cm Weight: approx. 1900 g

**A459: Stomach Model, 2 parts**



This life size model is dissected along the medial plane and can be opened to show the internal structure of the stomach, including the mucosa, the pylorus, a section of the gastric wall. The model also shows the superficial muscular layers and the blood vessels.

**A460: Stomach Model, 1.5 Times Enlarged, 2 Parts**



This model is dissected along the medial plane and can be opened to show the internal structure of the stomach, including the mucosa, the pylorus and a section of the gastric wall. Superficial dissections expose the longitudinal, circular and oblique muscle layers, with nerves and vascular structures.

**A469: Liver Model, natural size**

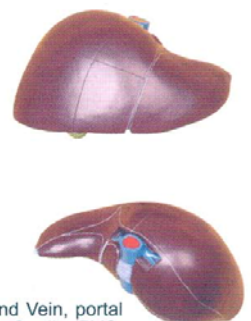


Natural size, Made of High Quality PVC. On a base. Dim: 20\*20\*10cm

**A472: Liver Model, 1.5 times Enlarged**

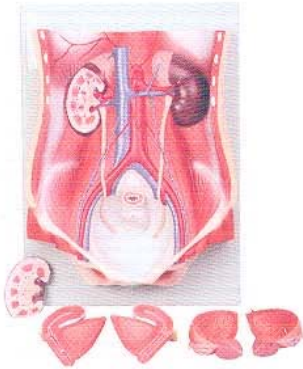


1.5 times magnified, this model shows the distribution of artery and vein, portal vein and bile duct inside liver. Mounted on a base. Made of High Quality PVC. Dim: 15\*26\*8CM





**A569: Block Model Of Urinary System, 6 Parts, Male Female Exchangable**



This natural size model shows kidney, ureter, bladder, uterus and the bottom of abdominal cavity with male and female parts exchangeable PVC Size: 42\*30\*11.5cm

**A582: Female Genital Organ, 4 parts**



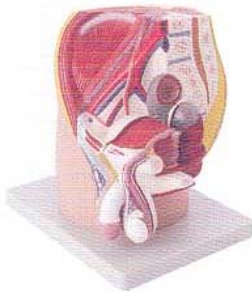
This model shows both the internal and external details of female genital organ. 4 parts. Natural size. Made of High Quality PVC. Dim: 13\*12\*14cm

**A572: Male Genital Organ, 4 parts**



This Model shows both the internal and external details of male genital organ. 4 parts. Natural size. Made of High Quality PVC. Dim: 13\*12\*14cm

**A570: Male Pelvis, 4 parts**



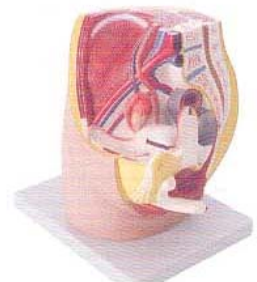
Open through the medial sagittal section of male pelvis, this model shows the internal organs of urinary and male reproductive system. 4 parts respectively are block pelvis, testis cover, penis. Made of High Quality PVC. Natural size On a base. Dim: 33\*23\*30cm

**A583: Female Internal Genital Organ**



1.5 times enlarged, shows the open vagina, cervix, uterus, ovary. Ovary is open to show developing follicles under different stages. Made of High Quality PVC. Mounted on a base. Dim: 17\*17.5\*12cm

**A580: Female Pelvis, 3 parts**



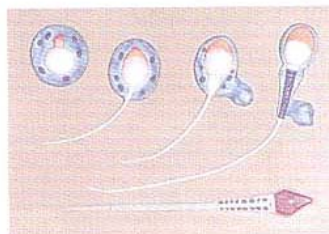
This model shows the urinary and female reproductive system. Open through the medial sagittal section, 3 parts respectively are, block of female pelvis, bladder and uterus, uterus cover. Natural size. Made of High Quality PVC. On a base. Dim: 33\*23\*30cm

**A578: Testis, 10X**



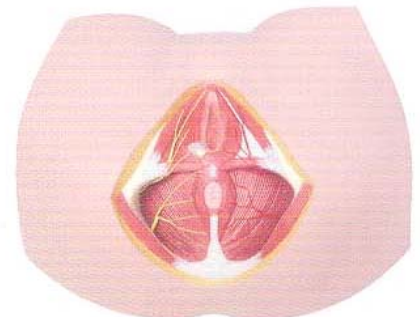
10 times enlarged, 1 part. The model shows the internal structures of testis: contorted seminiferous tubules, straight seminiferous tubules, rete testis, efferent ductules, epididymis, mounted on a base with stand. Made of High Quality PVC. Dim: 11\*11\*26cm

**A571: Spermiogenesis Model, 10000X**



This model represent the process of spermiogenesis: from a spermatid to a mature spermatozoon. Made of High Quality PVC. On a base. Dim: 53\*38\*5cm

**A361: Female Perineal Model**



The model shows the muscles, nerve and artery of female perineum region. Mounted on a base. Made of High Quality PVC. Dim: 40\*26\*11cm

**A360: Male Perineal Model**



The model shows the muscles, nerve and artery of male perineum region. Mounted on a base. Made of High Quality PVC. Dim: 40\*26\*11cm



**A471: Villus Model, Enlarged**



100 times enlarged, on a base,  
Made of High Quality PVC.  
Dim:14\*16.5\*8.5cm

**A480: Rectum and Anal Canal Model**



1 Part, Natural size. This model shows the internal  
detailed structures of rectum and anal canal. Made  
of High Quality PVC. On a base.  
Dim:20\*15\*6cm

**A543: Staged Model Of Decaying Tooth**



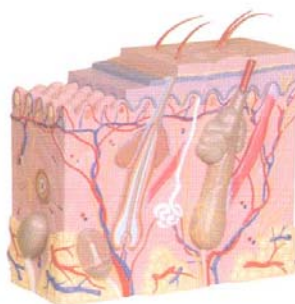
Shows different stage of decayed  
tooth, 7 parts 3X enlarged.  
Dim:13\*13\*7cm

**A540: Diseased Tooth**



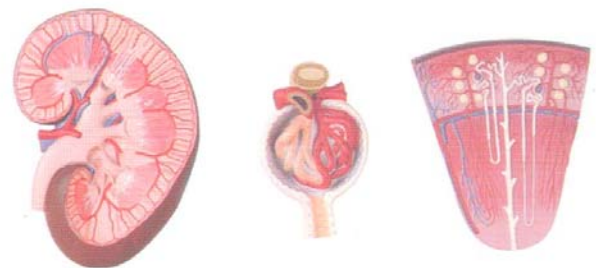
This 4X life size model shows the process of  
dental caries in its progressive stages. The  
tissues forming the tooth (enamel, dentine and  
pulp) are shown, along with the way in which they  
are affected by the caries process.  
Size: 6x4.5x11 cm

**A552: Block Model Of Skin,  
70 times Enlarged**



70 times enlarged, shows different layers of skin and  
hair, sebaceous gland, sweat gland, nerve endings,  
blood vessel and adipose etc. Made of High Quality  
PVC. On a base. Dim:22\*21\*11.5cm

**A564: Kidney, Nephron and Glomerulus**



Kidney, Nephron, Glomerulus, enlarged 3 times,  
120 times, and 700 times respectively. Made of High  
Quality PVC. On a base. Dim:70\*30\*8cm

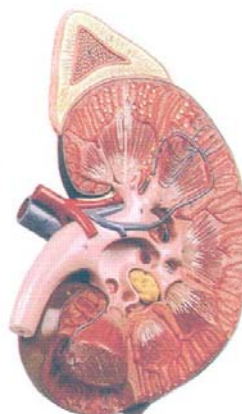
**A561: Kidney Model, 2 Parts, Natural Size**



Natural size kidney model, open through  
median section, inside details of kidney is well  
observed. 2 parts. Made of High Quality PVC.  
On a base. Dim:20\*11\*11 cm.

**A560: Deluxe Kidney with Adrenal Gland, 3X**

It is medianly dissected. 3 times  
enlarged. Made of High Quality  
PVC. On a base.  
Dim:40\*26\*8cm



**A568: Relief Model of Urinary System**



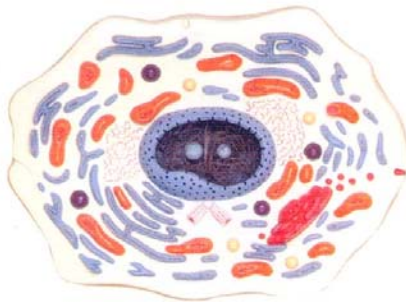
This relief model shows human and urinary  
system. Made of High Quality PVC. Mounted on a  
base. Dim:40\*26\*6cm

## A814: Frog Embryo Development Model, 11 parts

11 parts, installed on stand and base. Made of high quality PVC. Each Dim: 30\*11\*11cm



## A815: Animal Cell Model, 20000X



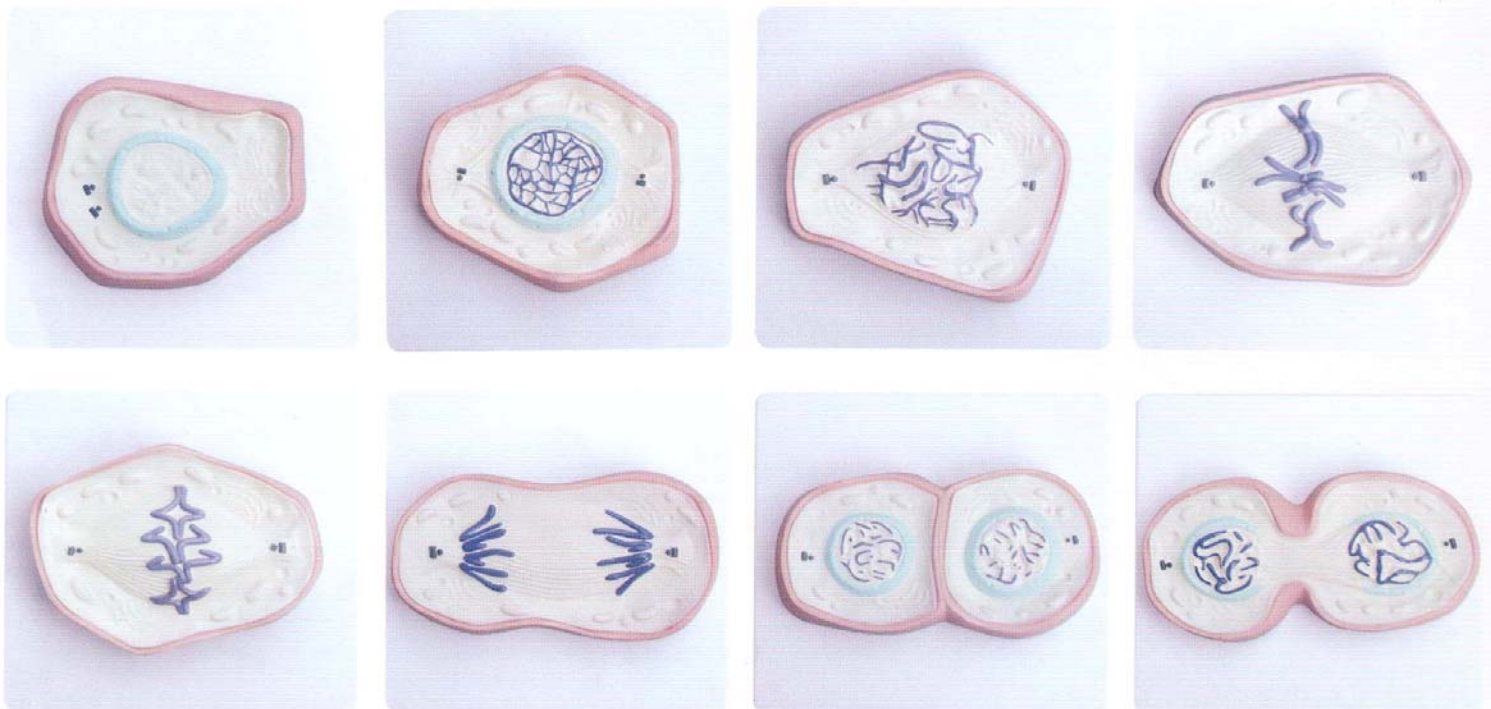
Animal cell model, 20000X enlarged, shows typical animal cell structure and all cellular organs. Dim: 43\*30\*10cm

## A818: Paramecium Model, 1800X, 3 Parts



Paramecium model, 1800 times enlarged, 3 parts, mounted. On a stand and base. Dim: 58\*19\*12cm

## A827: Cell Division Model, 8 parts



Each Mounted on a base, Dim: 18\*18\*3cm. 8 parts.



**A835: Plant Cell Model, 20000X**



Approx. 20000 times enlarged, shows the typical structure of a plant cell with all types of organelle. Made of High Quality PVC. Mounted on a base.  
Dim: 42\*30\*8cm

**A836: Dicot Flower Model (Peach Flower)**



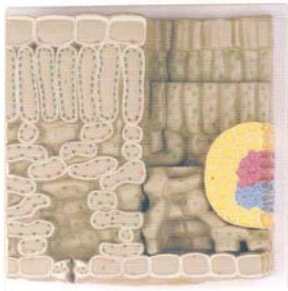
Enlarged about 8 times. Shows all features of typical dicot flower (peach flower).  
Dim: 45\*40\*30cm

**A837: Dicot Stem Model (1 Year Limon Tree), 120X**



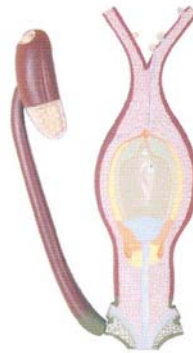
Shows the dicot stem of 1 year old plant, sectioned both in transverse and longitudinal direction. Enlarged about 120 times. Made of High Quality PVC. On a base. Dim: 42\*30\*30cm

**A838: Dicot Leaf Section Model, 700X**



Sectioned both in transverse direction and longitudinal direction through a dicot leaf, showing the microscopic structure. 700 times enlarged. Made of High Quality PVC. On a base.  
Dim: 42\*30\*12cm

**A839: Fertilization Of An Angiosperm**



This model shows the details of longitudinal section of angiosperm. 1 part. Made of High Quality PVC. On a base. Dim: 53\*38\*8cm.

**A840: Section through the peripheral part of a monocotyle stem**



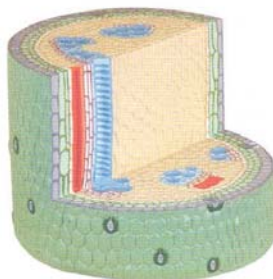
550 times magnified, 1 part, Made of High Quality PVC. On a base.  
Dim: 42\*30\*12cm

**A841: Conducting Bundles**



On a base. Made of High Quality PVC.  
Dim: 33\*23\*13cm

**A842: Dicot Stem Model, 250X**



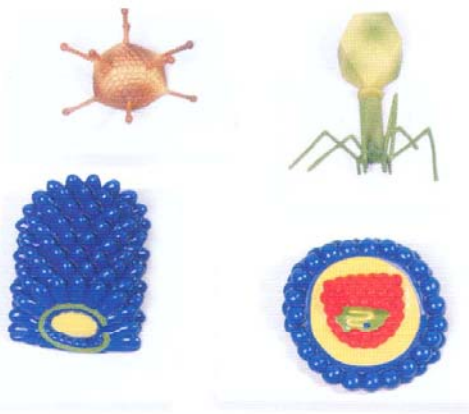
Shows the transverse and longitudinal section of a dicot stem. Enlarged about 250 times. Made of High Quality PVC. On a base.  
Dim: 29\*29\*22cm

**A843: Root Tip Model, 300X, 3 Parts**



Enlarged about 300 times. Shows the root tip with growing area. Made of High Quality PVC. Mounted on 1 base.  
Dim: 40\*20\*20cm

**A871: Virus Model, 4 types**



The set includes 4 type of typical virus: HIV, adenovirus, bacteriophage, rod-shaped virus. About 1 million times enlarged. Mounted on a base. Each Dim: 20\*15\*8cm

**A844: White Mold Model**



White mold, enlarged about 250 times, separated into 4 parts, on a base plate with explanatory note. The model shows sexual and non-sexual generation. Total 4 parts. Made of High Quality PVC. Dim: 40\*26\*20cm

**A845: 2 Years Old Stem Of A Limen Tree, 350X**



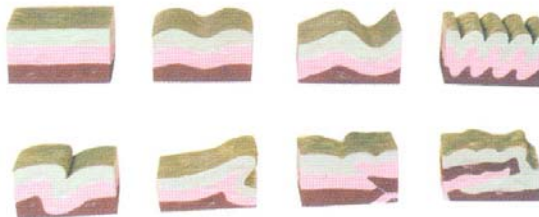
Tilia sp., section through the dispersed porous type of wood show all the elements of the wood structure (transverse, longitudinal, radial and tangential) in one piece, on a base. Enlarged about 350 times. Made of High Quality PVC. Dim: 69\*25\*20cm

**A901: Platonic Model**



This model represents active and passive margins, ocean ridges with rift valley, Benjoff plane, oceanic trenches, continental shelf and slopes. On a base. Made of High Quality PVC. Dim: 53\*38\*25cm

**A902: Development Models Of Fold**



This model series compose of 8 pieces which represent typically important folds and faults that can be found on the earth crust. Made of High Quality PVC. Each mounted on a base. Dim: 20\*18\*18cm each

**A903: Fold Model**



This model shows important types of fractures and faults due to tectonic stress. It is composed of a unique PVC Block, in which the joints and the faults can be clearly distinguished. On a base. Made of High Quality PVC. Dim: 53\*38\*30cm

**A904: 3-dimensional Model Of World Topography**



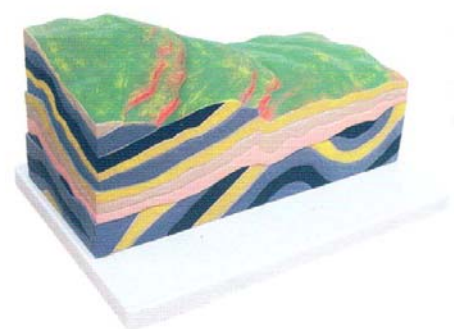
This model shows actual geographic representation of the most important oceanic structures. It is very useful for the understanding of the lithosphere processes. Made of High Quality PVC. Dim: 55\*40\*3cm

**A905: Model Of Great Canyon**



Miniature model. Made of High Quality PVC. On a base. Dim: 53\*38\*20cm

**A906: Layers Of Ground**



Miniature Model. Made of High Quality PVC. On a base. Dim: 33\*23\*14cm

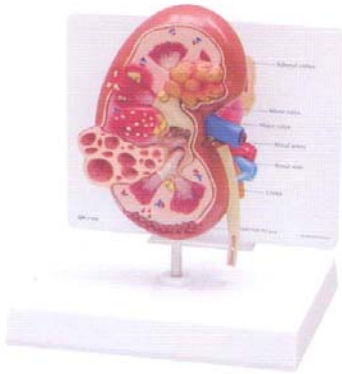


An eyeball shape mug?  
Or a tooth shape mug?



Tell us your idea, we can design and produce for you.

A739: Diseased kidney



A7951: Vetebrae Pen Holder



A7952: Heart Pen Holder



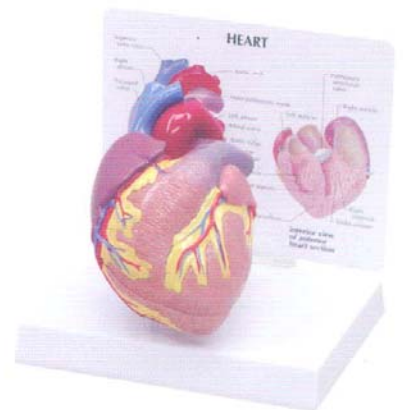
A725: Arteriosclerosis Model with Thrombus



A733: Pancrease/gallbladder/spleen



A734: Heart Model, 2 parts



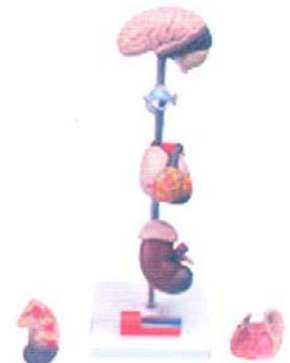
A742: Muscled shoulder



A744: Muscled knee



A721: Hypertension Model



A skull key-ring?  
Or an eyeball key-ring?

Tell us your idea, we can design and produce for you.



A730: Cataracts Model



A745: Disease Large Intestines



A661: Eye, 3 Times



A736: 4 Stages diseased vertebrae



A738: 4 Stages bronchus model



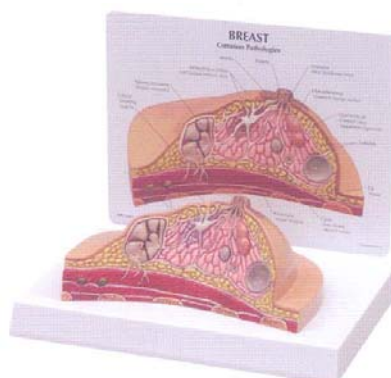
A732: Brain and partial skull model



A740: Breast cancer



A741: Diseased breast Model



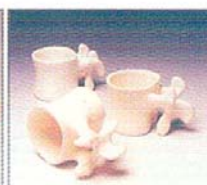
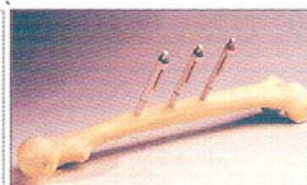
Shoulder Model (Small Size)





A pen-holding vertebrae?  
Or a vertebrae shape mug?

Tell us your idea, we can design and produce for you.



Osteoporosis Model



Advanced Osteoporosis Model



Lumbar Vertebra Model



Atlas And Axis With Occipital Bone Model



Cervical Vertebrae Occipital Bone With Spinal Cord Model



Hip Joint Model(1/2 Size)



A206: Knee Model(1/2 Size)



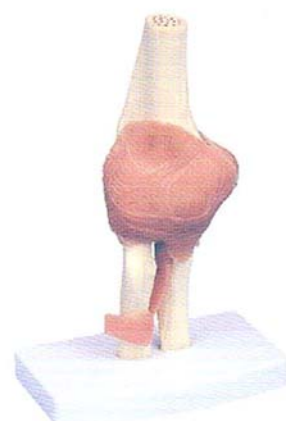
A1211: Thoracic Vertebra With Spinal Nerves



A1212: Lumbar Vertebra, Sacrum Bone With Spinal Nerves

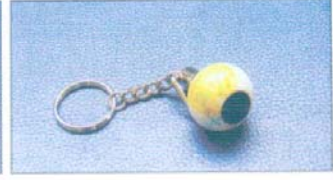


A203: Elbow Joint Model



A skull key-ring?  
Or an eyeball key-ring?

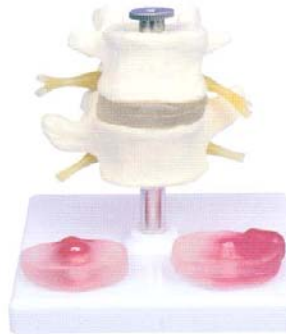
Tell us your idea, we can design and produce for you.



A131: Vertebra Rupture And Herniate Disc Model



A130: Inter-Vertebra Disc With Pathologic Symptom



A2021: Knee Joints Synthesis Model



A209: Left Arm Joint-Functional Model



A542: Disease Teeth Model



A521: Nasal Cavity, Oral Cavity, Throat, Pharynx



A5201: Teeth Care Model



A400: Human Heart, Natural Size

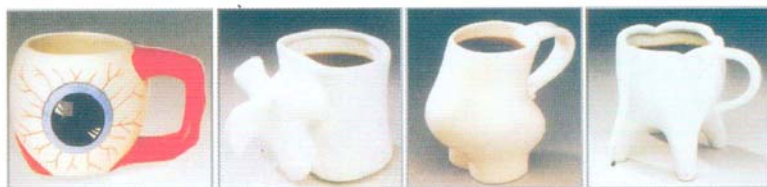


A400a: Human Heart, Natural Size



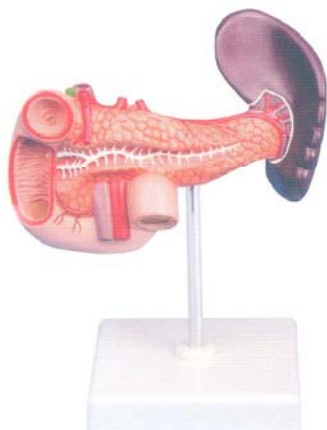


An eyeball shape mug?  
Or a tooth shape mug?



Tell us your idea, we can design and produce for you.

A470: Pancreas, Duodenum And Spleen



A441: Bronchitis Model



A455: Disease Esophagus Model



A290: Acupuncture Model



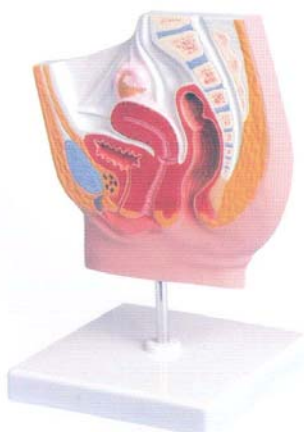
A572: Male Genital Organ



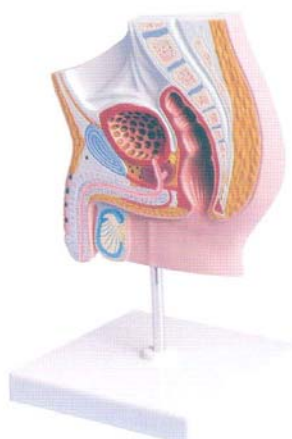
A582: Female Genital Organ



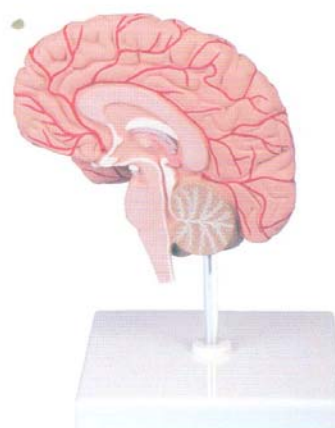
A5801: Female Pelvis



A5701: Male Pelvis

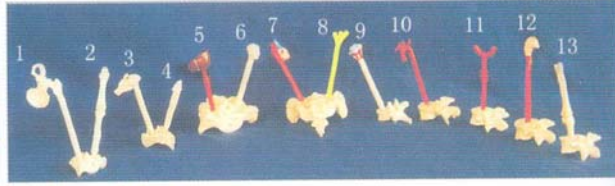
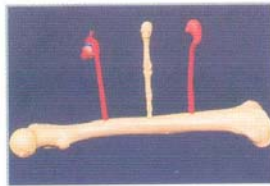


A6101: Right Brain Model

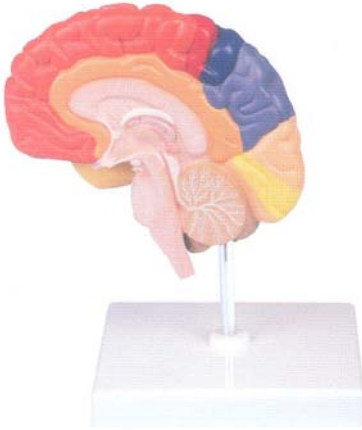


A pen-holding vertebrae?  
Or a vertebrae shape mug?

Tell us your idea, we can design and produce for you.



A6121: Right Brain With Different Functional Area



A566: Model Of Bladder



A5616: Renal calculus model



A725: Arteriosclerosis Model



A5792: Prostatic hyperplasia model



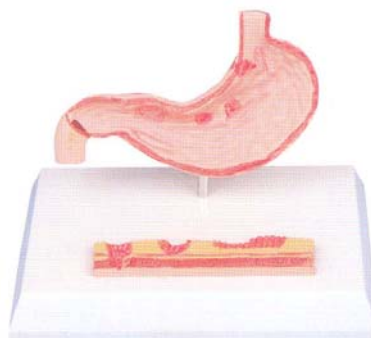
A5791: Prostatic csarcinoma model



A579: Prostate model



A456: Disease Stomach



A459: Stomach, Natural Size





